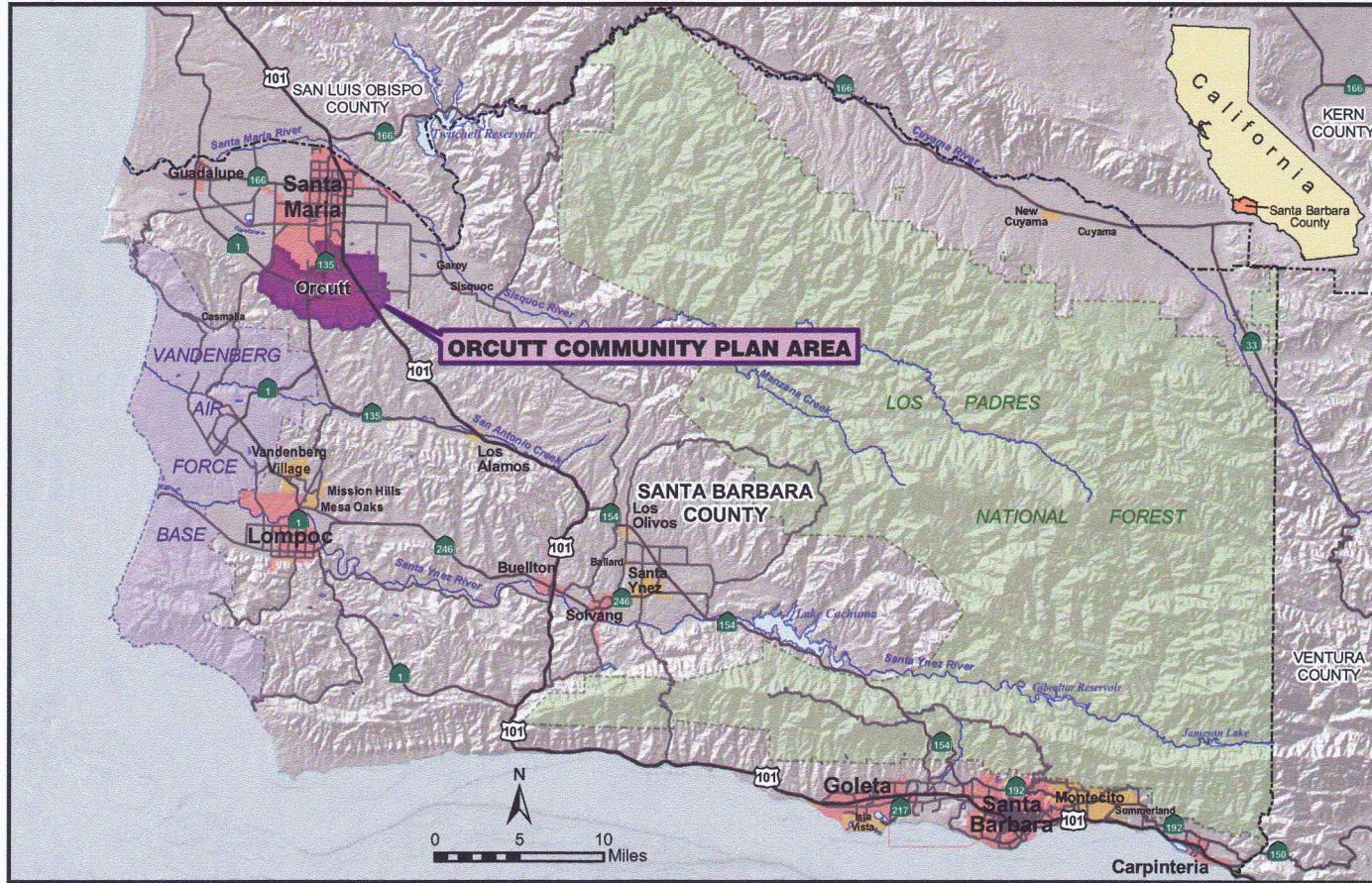


**The Tale of WAT-O-2
Groundwater and Regional Planning
in
The Community of Orcutt
Santa Barbara County**

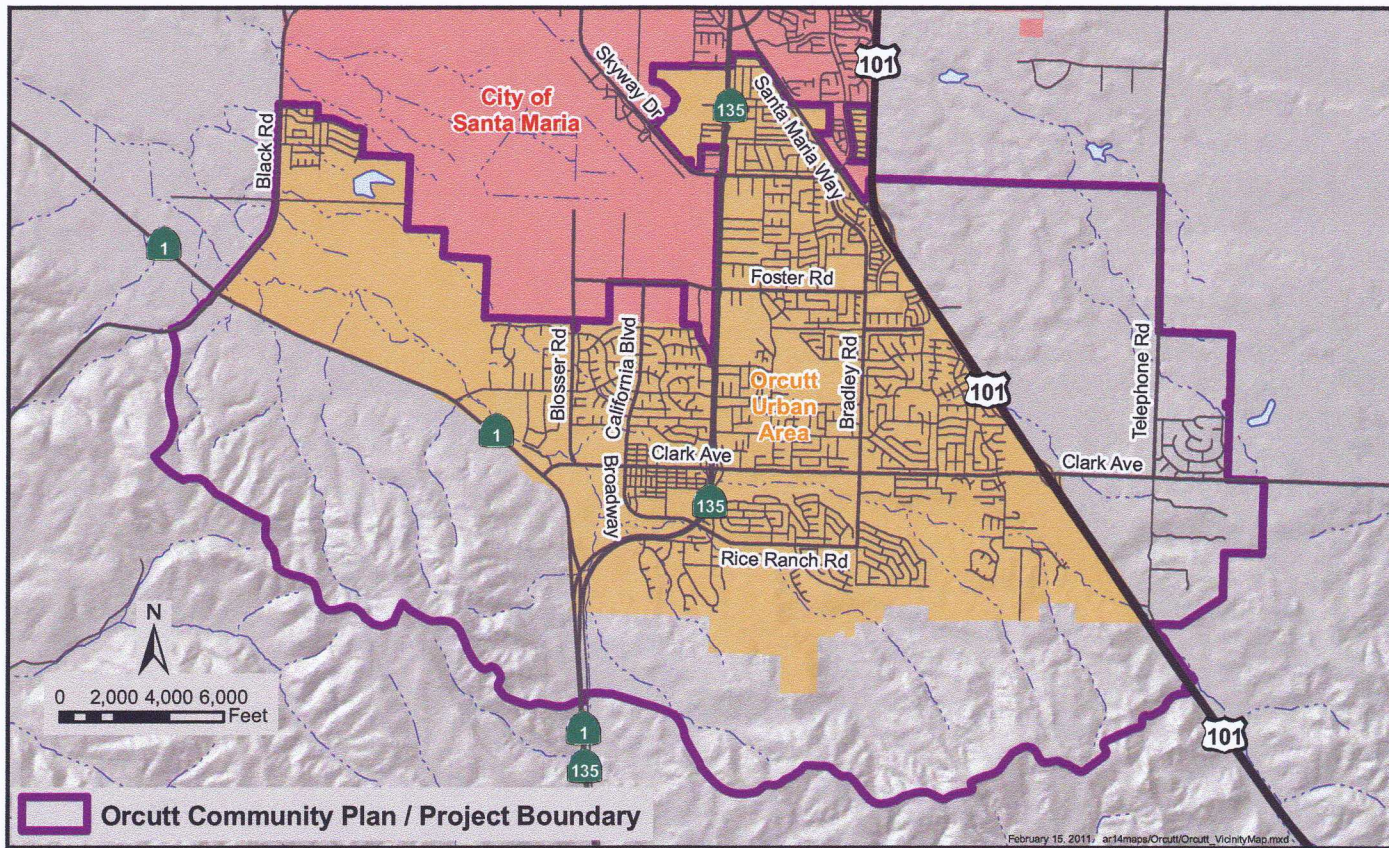
County of Santa Barbara
Planning & Development Department
Dr. Glenn S. Russell, Director



Orcutt Vicinity



Orcutt Area



ORCUTT COMMUNITY PLAN

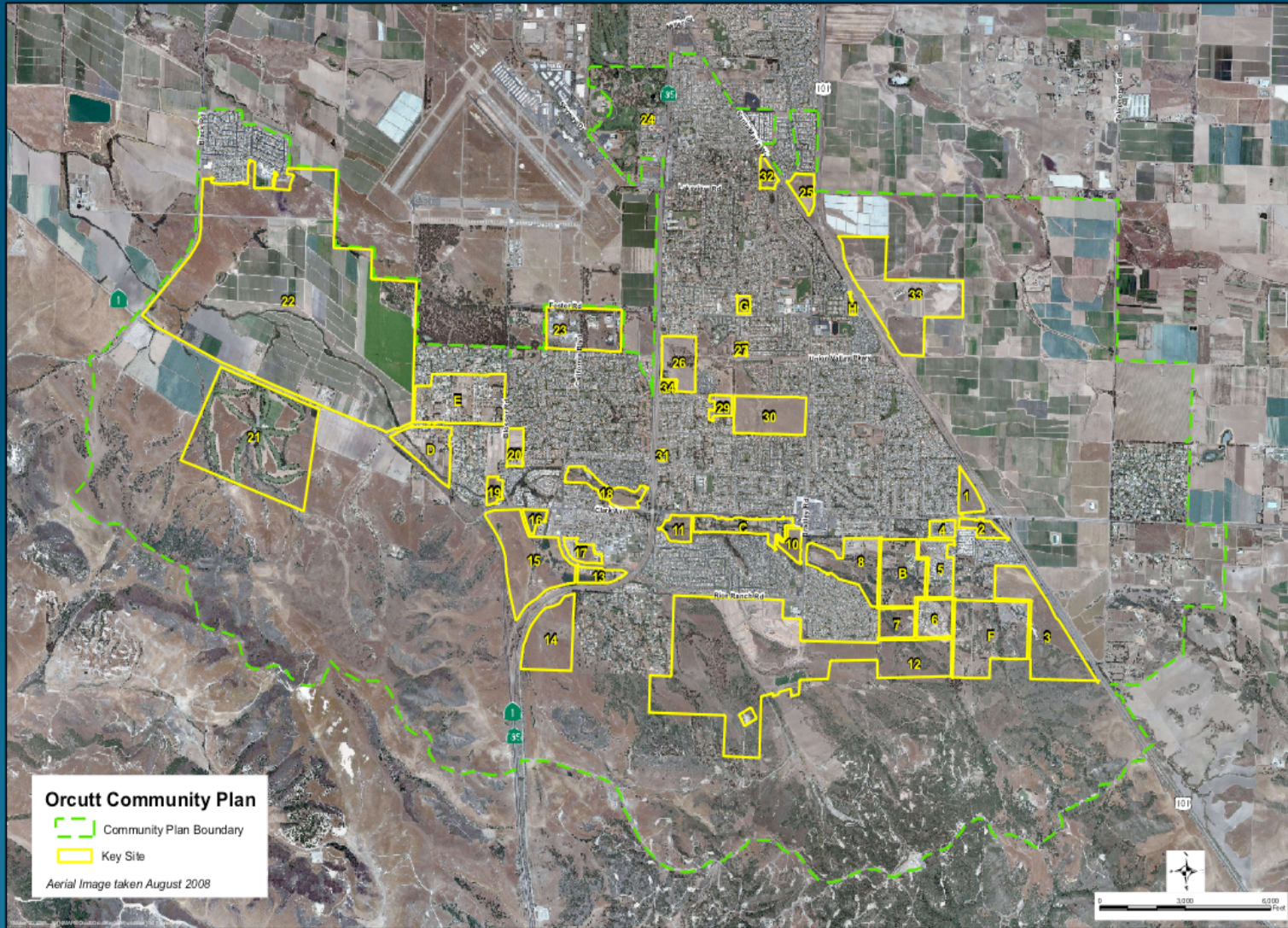


Santa Barbara County Planning & Development
Comprehensive Planning Division

Adopted July 1997
Amended July 2001
Amended October 2004
Printed March 2005



Orcutt Key Sites



Policy WAT-O-2

Policy WAT-O-2: In order to be found consistent with Land Use Development Policy No. 4 (LUDP#4), the water demand of new discretionary development must be offset by long-term* supplemental** water supplies that do not result in further overdraft of the local groundwater basin and that are adequate to meet the project's net water demand as determined by the County considering appropriate reliability factors as determined by County Water Agency. To demonstrate an adequate long-term supplemental water supply, projects must comply with the following development standards:

* "long-term" means permanent source of water for development.

** "supplemental" water means a source of water other than groundwater, unless: 1. the groundwater basin has been determined to be no longer in overdraft, or 2. The use of groundwater is consistent with the final water rights judgement entered in the Santa Maria Groundwater Basin adjudication (Santa Maria Valley Water Conservation District v. City of Santa Maria, et al., Santa Clara County Superior Court Case No. CV 770214).

Amended by Res. 01-225, 7/10/01

DevStd Wat-O-2.1: Prior to discretionary action by any County decision-maker on new development, the applicant shall provide one of the following:

1. A "Can and Will Serve" letter from California Cities Water Company dated before July 1997;
2. An "Intent to Serve" letter from California Cities Water Company or other water purveyor(s) including draft contract(s), if any, demonstrating to the County's satisfaction that the development's net water demand will be offset by a long-term supplemental water supply and that the development will have a continuing right to obtain water equal to that of the water purveyor's other customers. Contract(s), if any, must include terms consistent with the requirements of DevStd WAT-O-2.2.

(Amended by Res. 01-225, 7/10/01)



State Water Allocations

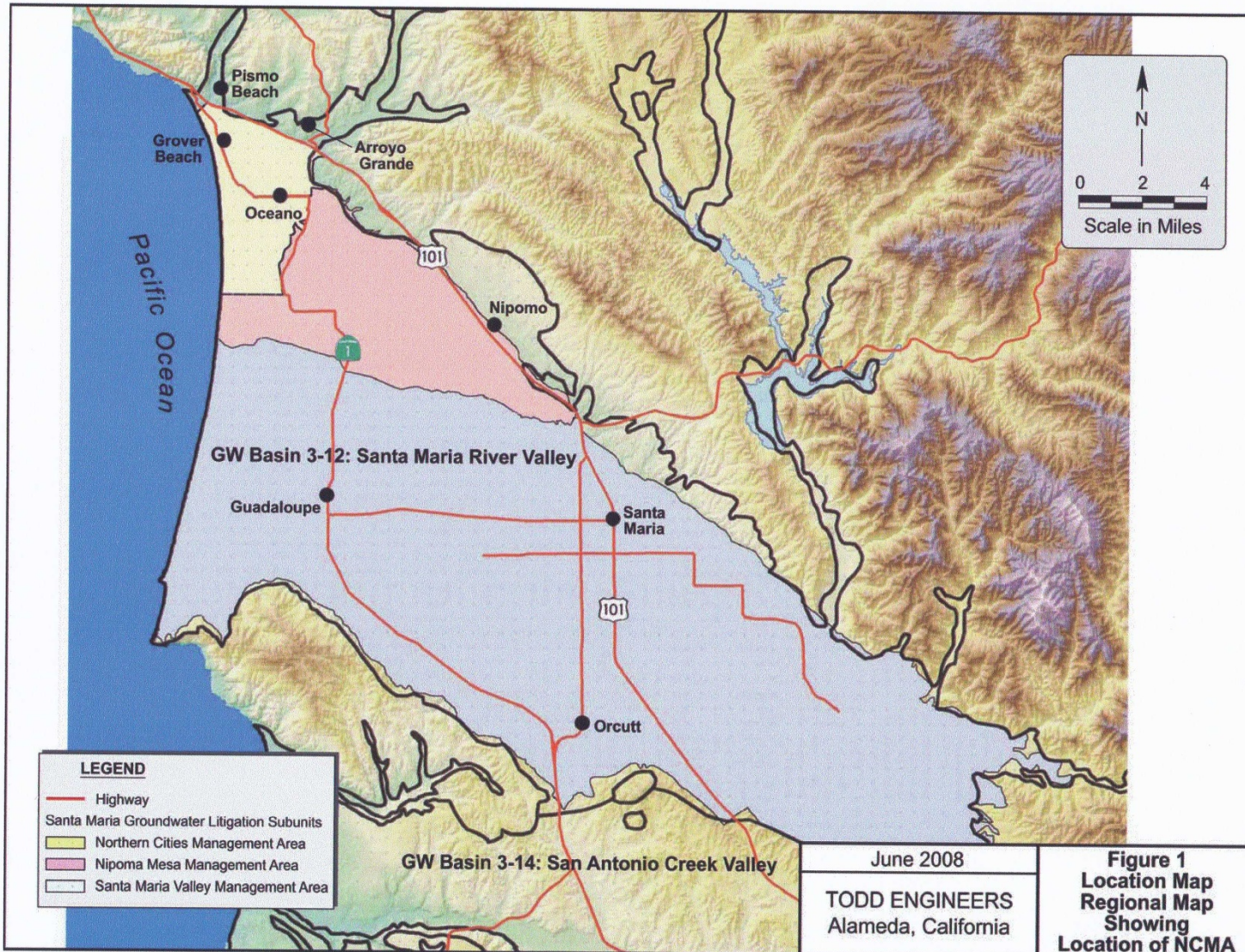
State Water Allocations in Santa Barbara County (AFY)		
Project Participant	SWP Allocation	Drought Buffer
City of Santa Maria	16,200	1,620
Golden State Water Company	500	50
City of Guadalupe	550	55
Vandenberg Air Force Base	5,500	550
City of Buellton	578	58
City of Solvang	1,500	0
Santa Ynez River Water Conservation District ID#1	500	200
Raytheon Infrared Operations	50	5
Morehart Land Company	200	20
La Cumbre Mutual Water Company	1,000	100
Goleta Water District**	4,500	450*
City of Santa Barbara	3,000	300
Montecito Water District	3,000	200
Carpinteria Valley Water District	2,000	200
Total:	39,078	3,908

Table 1: State Water Project Allocations

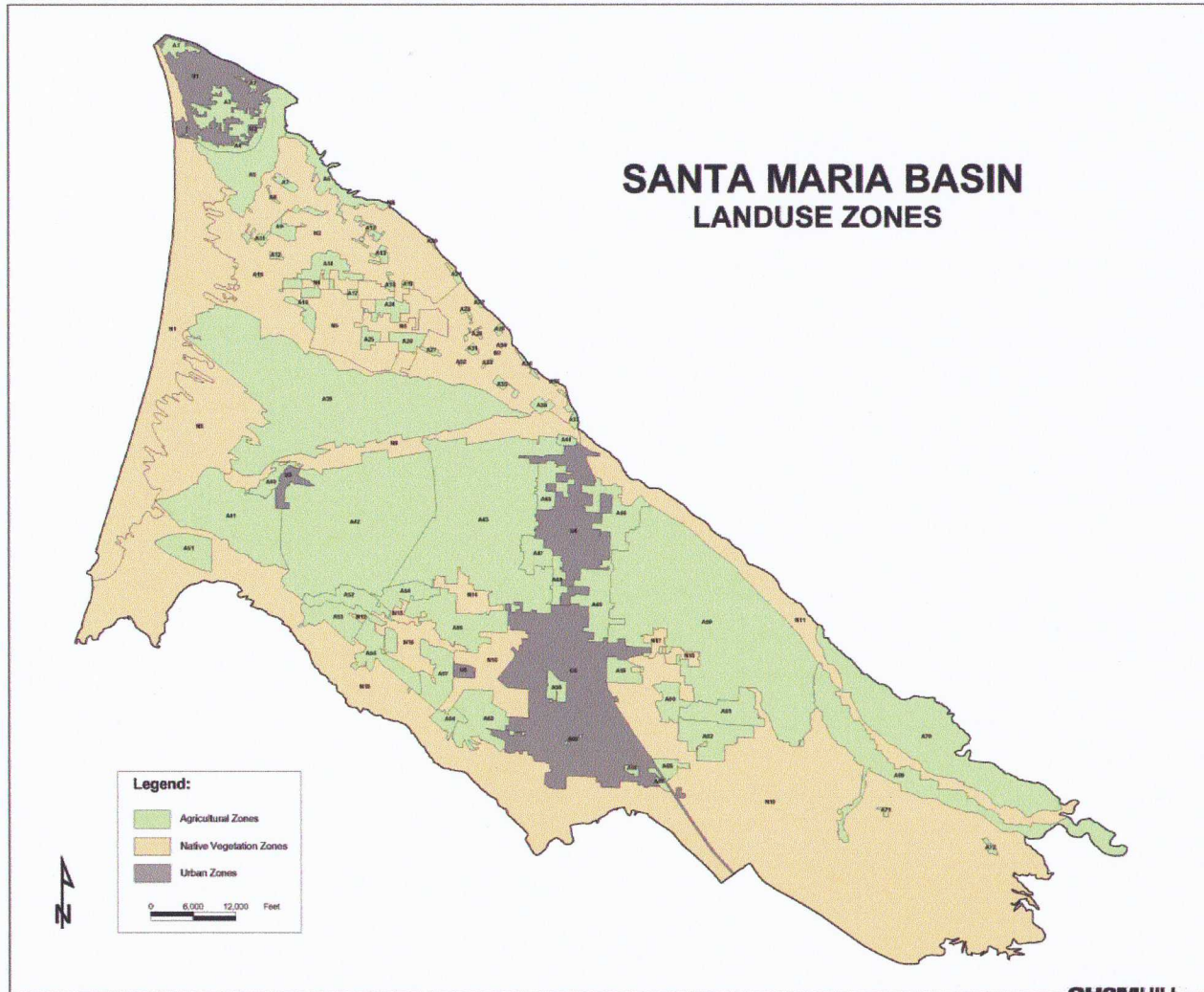
***Goleta has an additional 2,500 AFY of drought buffer, in addition to its 450 AFY, Drought buffer does not have a pipeline or treatment plant capacity associated with it, thus it serves for increased reliability only*



Santa Maria Groundwater Basin



Santa Maria Basin Landuse



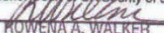
Litigation- 2005 Stipulation

7	SUPERIOR COURT OF THE STATE OF CALIFORNIA	
8	COUNTY OF SANTA CLARA	
9		
10	SANTA MARIA VALLEY WATER) SANTA MARIA GROUNDWATER
11	CONSERVATION DISTRICT,) LITIGATION
12	Plaintiff,) Lead Case No. CV 770214
13	v.) (CONSOLIDATED FOR ALL PURPOSES)
14	CITY OF SANTA MARIA, et al.,) [Consolidated With Case Numbers:
15	Defendants.) CV 784900; CV 785509; CV 785522;
16) CV 787150; CV 784921; CV 785511;
17	AND RELATED CROSS-ACTIONS AND) CV 785936; CV 787151; CV 784926;
18	ACTIONS CONSOLIDATED FOR ALL) CV 785515; CV 786791; CV 787152;
19	PURPOSES) CV 036410]
20) San Luis Obispo County Superior Court Case
21) Nos. 990738 and 990739
22) [Assigned to Judge Jack Komar for All
) Purposes]
		<u>STIPULATION (JUNE 30, 2005 VERSION)</u>



Litigation- 2008 Final Judgment

1
2
3
4
5
6
7
8
9
10
11
12
13
14
15
16
17
18
19
20
21
22
23
24
25
26
27
28

FILED
JAN 25 2008
KIRI TORRE
Chief Executive Officer/Clerk
Superior Court of CA/County of Santa Clara
BY  DEPUTY
ROWENA A. WALKER

**SUPERIOR COURT OF CALIFORNIA
COUNTY OF SANTA CLARA**

<p>SANTA MARIA VALLEY WATER CONSERVATION DISTRICT, Plaintiff, vs. CITY OF SANTA MARIA, ET AL., Defendants.</p> <hr/> <p>AND RELATED CROSS-ACTIONS AND ACTIONS CONSOLIDATED FOR ALL PURPOSES</p>	<p>SANTA MARIA GROUNDWATER LITIGATION Lead Case No. 1-97-CV-770214</p> <p>(CONSOLIDATED FOR ALL PURPOSES)</p> <p>[Consolidated With Case Numbers: CV 784900; CV 785509; CV 785522; CV 787150; CV 784921; CV 785511; CV 785936; CV 787151; CV 784926; CV 785515; CV 786791; CV 787152; 1-05-CV-036410]</p> <p>San Luis Obispo County Superior Court Case Nos. 990738 and 990739</p> <p>JUDGMENT AFTER TRIAL</p>
---	--

This matter came on for trial in five separate phases. Following the third phase of trial, a large number of parties entered into a written stipulation dated June 30, 2005 to resolve their differences and requested that the court approve the settlement and make its terms binding on them as a part of any final judgment entered in this case. Subsequent to the execution of the stipulation by the original settling parties, a number of additional parties have agreed to be bound by the stipulation – their signatures are included in the attachments to this judgment.

1

Case No. 1-97-CV-770214
Judgment After Trial



Litigation- 2012 Appeal

Filed 11/21/12

CERTIFIED FOR PUBLICATION

IN THE COURT OF APPEAL OF THE STATE OF CALIFORNIA

SIXTH APPELLATE DISTRICT

CITY OF SANTA MARIA et al.,

Cross-complainants, Cross-defendants
and Respondents,

v.

RICHARD E. ADAM et al.,

Cross-defendants, Cross-complainants
and Appellants;

GOLDEN STATE WATER COMPANY et al.,

Cross-defendants, Cross-complainants
and Respondents;

NIPOMO COMMUNITY SERVICES
DISTRICT et al.,

Cross-defendants and Respondents.

[And three other cases.*]

H032750
(Santa Clara County
Super. Ct. No. CV770214)

This appeal concerns rights to groundwater contained in the Santa Maria Valley Groundwater Basin (Basin). The Basin suffered severe water shortages beginning around the 1930's but the importation of water from outside the watershed and the local

* City of Santa Maria et al. v. Richard E. Adam et al., Golden State Water Company et al. (No. H033544); City of Santa Maria et al. v. Richard E. Adam et al., Golden State Water Company et al. (No. H034362); City of Santa Maria et al. v. Richard E. Adam et al., Golden State Water Company et al., Nipomo Community Services District et al. (No. H035056).



What is the Future of WAT-O-2 ?



Cuyama Groundwater Basin



Figure 46: The Cuyama Valley



Cuyama Groundwater Basin

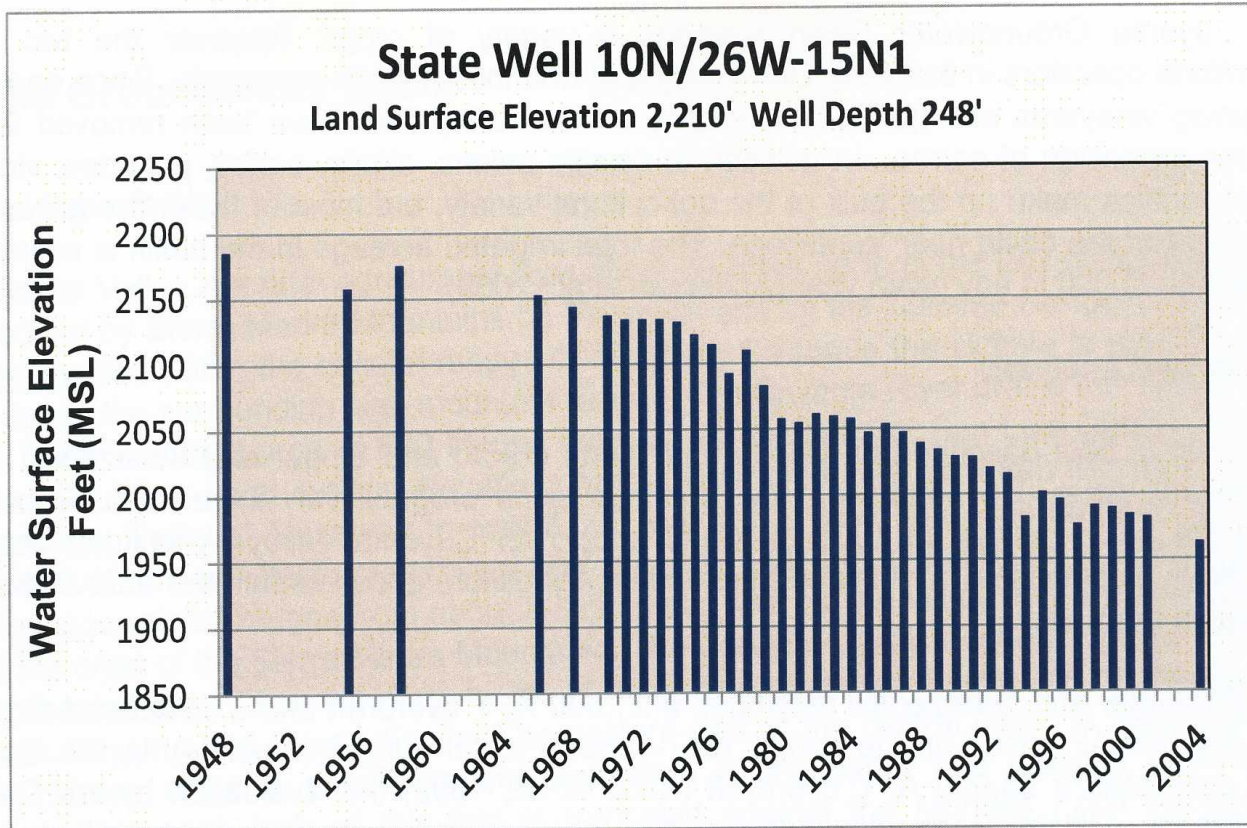


Figure 48: Hydrograph for State Well 10N/26W-15NE1

